



Modric Washroom Operation and Maintenance Manual

In accordance with Regulation 38 of the Building Regulations 2010, this document is supplied to provide operation and maintenance information for the products supplied to your project by Allgood plc.

This document should be passed to whoever is taking responsibility for assembling the Fire Safety Information file for the building.

Contents



Washroom panels

Page 3



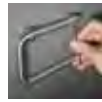
Hand dryers

Page 5



Paper towel dispenser and Waste bin

Page 7



Toilet roll holders

Page 8



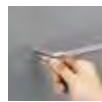
Toilet brush holders

Page 9



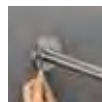
Soap dispenser

Page 10



Soap tray, Shampoo tray and Towel rails

Page 11



Grab and Backrest rails

Page 12



Care of finishes


Page 13



- **When cleaning the stainless steel hand dryer fascia**, check for dirt and grease and wipe clean as directed in the 'Care of finishes' section (page 13).
- **To open the Washroom panel**, insert the Modric key supplied into the concealed lock (see fig.1).

weekly checks

- **If the panel door has dropped and you need to realign the panel position**, turn the screw (fig.2) to the desired position until the door sits flush into the panel.
- **If the panel door has become tight and difficult to open/close** adjust the ball catch accordingly (see fig.3).
- **If panel door has become loose** tighten screw on hinge (see fig.4)

 **For maintenance details of the washroom hand dryers please refer to page 5.**

monthly checks

Fig.5



Fig.6



The Modric washroom panels were designed with the end user in mind, making refilling and cleaning easy.

- **When refilling the papertowel dispenser,** fill from the top (fig.5)
- **Remove dust, fluff and any other build up of foreign matter** from the inlet and outlet grille areas (fig.6)
- **When emptying the bin,** remove the bin receptacle by lifting from the panel casing and dispose as necessary.

weekly checks



The hand dryer **MUST** be isolated from the power supply during installation or maintenance.

- **When cleaning the stainless steel hand dryer fascia**, check for dirt and grease and wipe clean as directed in the 'Care of finishes' section (page 13).
- **Remove** dust, fluff and any other build up of foreign matter from the inlet and outlet grille areas (fig.7)
- **Clean and check** the sensor area is clear of obstruction, removing any obstructing matter if required.

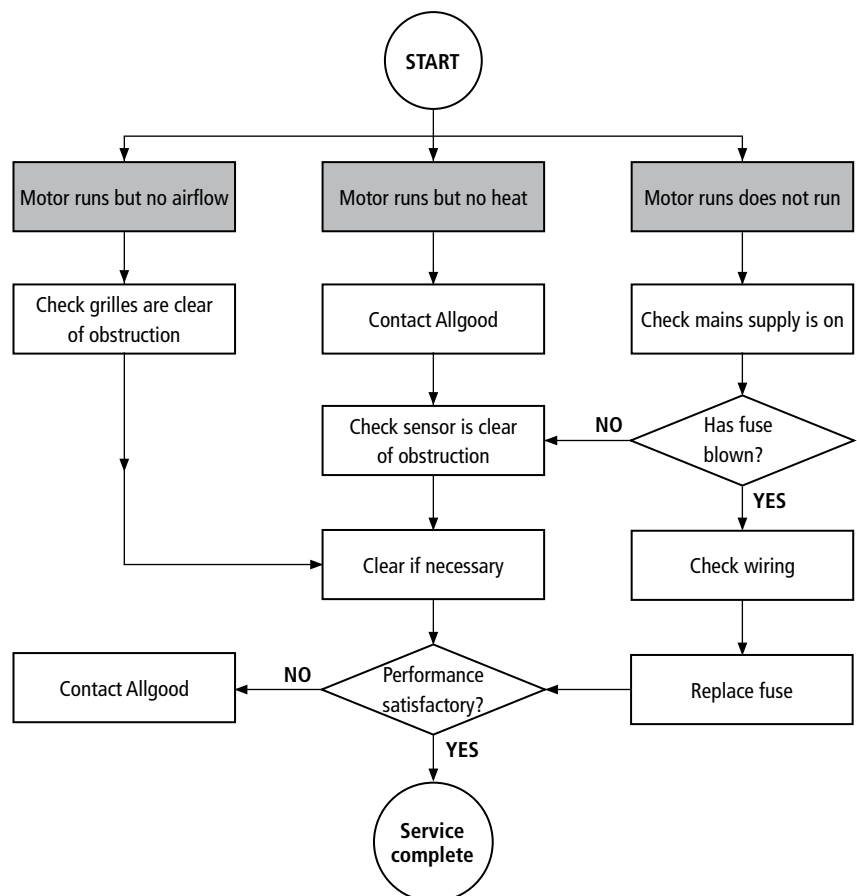
weekly checks

- **If there is movement in the hand dryer unit on the wall** check that the fixings are tight. If the hand dryer becomes loose, please tighten the relevant fixings (fig.8).
- If after completion of the above checks the Modric surface mounted hand dryer is not working satisfactory, please contact **Allgood** on 020 7387 9951

monthly checks



The hand dryer **MUST** be isolated from the power supply during installation or maintenance.



Paper towel dispenser and Waste bin

Fig.9



Fig.10



Fig.11



Fig.12



- **When cleaning the stainless steel paper towel dispenser and bin fascia,** check for dirt and grease and wipe clean as directed in the 'Care of finishes' section (page 13).
- **When refilling the paper towel dispenser,** pull front fascia forward (fig.10) and fill from the top (fig.11).
- **When emptying the bin,** remove the bin receptacle by lifting from the panel casing and dispose as necessary (fig.12).

weekly checks

- **If the bin has become loose** check that the fixings are tight and that there is no movement on the bin. If the items are loose, please tighten the relevant fixings (fig.9).

monthly checks

Fig.13



Fig.14



Fig.15



- **When cleaning the stainless steel toilet roll holder**, check for dirt and grease and wipe clean as directed in the 'Care of finishes' section (page 13).

weekly checks

- **If the toilet roll holder has become loose** check that the fixings are tight and that there is no movement on the bracket or fixings to the wall. If the items are loose, please tighten the relevant fixings (fig.13).
- **To access the fixings** of the single and double toilet roll holder, remove holder by unscrewing the end cap (fig.14) and slide holder out of the bracket. Then tighten the fixings as necessary (fig.15).

monthly checks

Fig.16



Fig.17



Fig.18



Fig.19

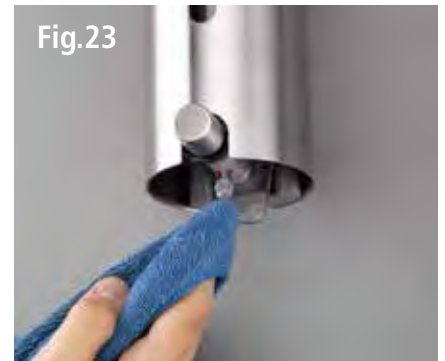


- **When cleaning the stainless steel toilet brush holder**, check for dirt and grease and wipe clean as directed in the 'Care of finishes' section (page 13).
- The brush and liner need to be cleaned by removing from the holder (fig.19).

weekly checks

- **If the toilet brush holder has become loose** check that the fixings are tight and that there is no movement on the bracket or fixings to the wall. If the items are loose, please tighten the relevant fixings (fig. 16 & 17).
- **If the toilet brush becomes loose from the handle**, tighten by rotating clockwise (fig. 18).

monthly checks



- **When cleaning the stainless steel soap dispenser** check for dirt and grease and wipe clean as directed in the 'Care of finishes' section (page 13).
- **To refill the soap dispenser,** remove the sleeve by inserting the Modric key supplied (fig.20) turning anti-clockwise and lifting the sleeve off (fig.21). Remove the plastic cap (fig.22) and pour soap into the dispenser.

weekly checks

- **If the dispenser has become loose,** check that the fixings are tight and that there is no movement on the cap bracket or fixings to the wall. If the items are loose, please tighten the relevant fixings (fig.17).

monthly checks

Fig.24



Fig.25



Modric Soap, Shampoo tray and towel rails are all manufactures in the UK from grade 316 stainless steel.

- **When cleaning the stainless steel soap, shampoo trays and towel rails,** check for dirt and grease and wipe clean as directed in the 'Care of finishes' section (page 13).

weekly checks

- **If the trays or rails become loose,** check that the fixings are tight and that there is no movement on the fixings to the wall. If the items are loose, please tighten the relevant fixings (fig.24 and 25).

monthly checks

Grab and Backrest rails

Fig.26



Fig.27



Fig.28



Fig.29



- **When cleaning the stainless steel grab and backrest rails**, check for dirt and grease and wipe clean as directed in the 'Care of finishes' section (page 13).

weekly checks

- **If the rails become loose**, check that the fixings are tight and that there is no movement on the fixings to the wall. If the items are loose, please tighten the relevant fixings (fig.26-29).

monthly checks



Satin Stainless Steel

Wipe clean with a medium strength detergent or white spirit using a soft cloth or sponge. Rinse and dry with a dry soft cloth. In the event of dirt having accumulated through neglect, application of aerosol lubricant prior to standard cleaning is recommended. A harsh brush should never be used.

Finish prefixes: SS • ST

Polished Stainless Steel

Wipe clean with a medium strength detergent or white spirit using a soft cloth or sponge. Rinse and dry with a dry soft cloth. In the event of dirt having accumulated through neglect, application of aerosol lubricant prior to standard cleaning is recommended. A harsh brush should never be used.

Finish prefixes: PS • SP

Proud distributors of Modric for 26 years

modric Inc,
National Headquarters for North America,
P.O.Box 1639
Arboles
Colorado 81121
t. 800-739-0202
f. 800-813-2128
e. info@modric.net